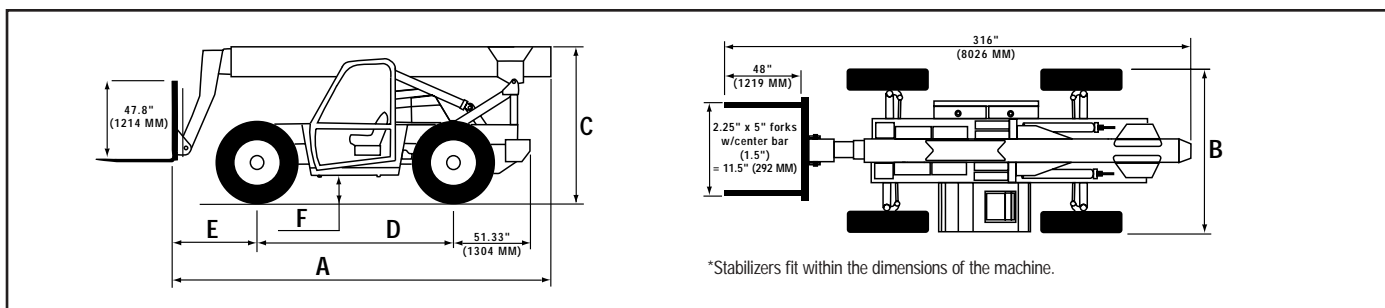


VR-1056C Material Handlers

SPECIFICATIONS



MACHINE DIMENSIONS*		FT/IN	MM
Overall length (less forks)	A	22' 6"	6,858
Overall width	B	8' 6"	2,591
Overall height	C	8' 2"	2,482
Wheelbase	D	11' 1/2"	3,366
Drive axle to carriage front	E	6' 1"	1,852
Ground clearance	F	1' 4"	406
Operating weight**		31,528 lb	14,331 kg
Tread width		7' 2"	2,180
Boom extension		35' 4"	10,763
Max. forward reach		41' 6"	12,647
Max. lift height		56' 2"	17,142
Max. reach @ max lift height		8' 8"	2,636
Practical placement height		54' 4"	16,561
Max. reach @ practical placement height		12' 0"	3,644
Max. reach below grade w/standard carriage		3' 4"	1,024
TURNING RADIUS		FT/IN	MM
To outside of tires		12' 10"	3,892
To inside of tires		6' 0"	1,823
PERFORMANCE		LBS	KG
WITH STABILIZERS DOWN			
Boom retracted at max. height		10,000	4,540
Capacity at max. height		6,000	2,727
Capacity at max. reach		3,000	1,364
WITH STABILIZERS UP			
Boom retracted at max. height		10,000	4,545
Capacity at max. height		4,000	1,818
Capacity at max. reach		450	204
FRAME LEVELING @ BOOM ANGLE LESS THAN 40 DEGREES			
		Right 10°	
		Left 10°	
FRAME LEVELING @ BOOM ANGLE GREATER THAN 40 DEGREES			
		Right 4°	
		Left 4°	

56-ft 2-in
Maximum Lift Height

110 hp
EPA Tier II
Turbocharged Diesel Engine

10,000 lb
Rated Lift Capacity



* Vehicle dimensions with 24-inch (600 mm) load center.

** Lightest machine — no attachment, air-filled tires and open ROPS.

VR-1056C Material Handlers

SPECIFICATIONS

BOOM

Boom type	4 stage
Max. boom angle	70°
Min. boom angle	-6°
Telescope extend speed	19.1 seconds
Telescope retract speed	16.1 seconds
Boom raised	13.7 seconds
Boom lowered	11.7 seconds
Carriage rotation	113°

ENGINE

Make/Model	Cummins QSB4.5-30-T
Fuel/Cooling	Diesel/Liquid
SAE net hp	110 hp (82.1 kW)
Fuel Tank Capacity	35 gal (132.65 L)

OPERATION

Steering	Two-wheel, four-wheel or crab steering available controlled by steering wheel.
Drive	All-wheel drive
Hydraulics	Boom lift, telescope, carriage rotate, and auxiliary boom circuit controlled by single joystick. Stabilizers controlled by console switch.
Transmission	3-speed powershift with soft shift

STANDARD FEATURES

- Rear axle stabilization
- Single joystick control
- Single auxiliary hydraulics
- Stabilizers
- Air cleaner restriction indicators
- Back up alarm
- Boom angle indicator
- Cup holder
- Engine coolant heater
- Frame level indicator
- Horn and seatbelt
- Lockable engine hood
- 12 volt power port
- Lockable battery cover
- Lockable fuel tank cap
- Lockable hydraulic tank cap
- Lockable toolbox
- Rear wiper/washer

OPTIONS/ACCESSORIES

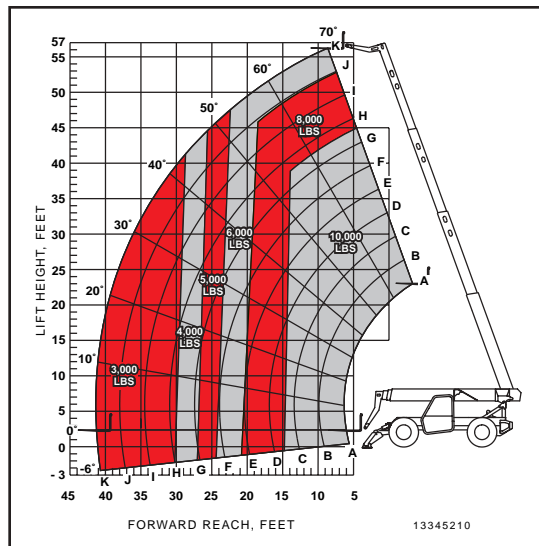
- Air conditioning
- All weather cab w/heat
- Boom lights
- Dual joystick control
- Ether cold start
- Fenders
- Front and rear worklights
- Full suspension seat
- Pintle hook
- Roadlights
- Rotating beacon
- Specialty tire options
- Turn signals/flashers/brake lights
- Vandal protection

ATTACHMENTS*

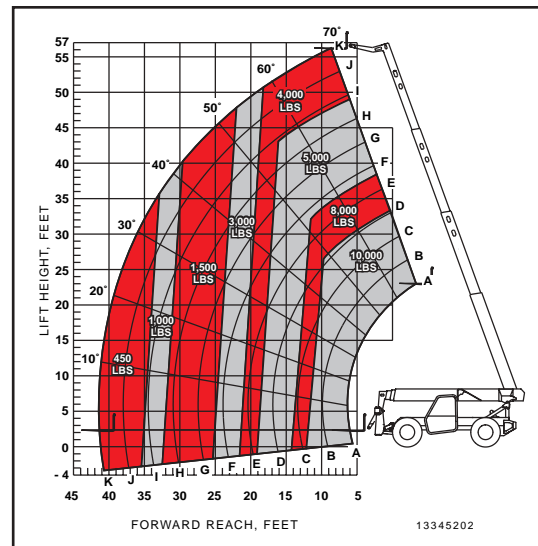
- Buckets
- Drywall handler
- Side tilt carriages
- Swing carriages
- Truss booms
- Various width carriages

* Contact your local IR distributor for additional attachment options

VR-1056C with stabilizers down



VR-1056C with stabilizers up



Always read and understand the published rate load capacity for the material handler model you are operating and do not exceed it. Load ratings per ASME B56.6 — 1992.

www.irco.com
(877) IR BRAND

IR Ingersoll-Rand

© 2003 Ingersoll-Rand Co.

Form 07-0003
Printed in USA 03-02